



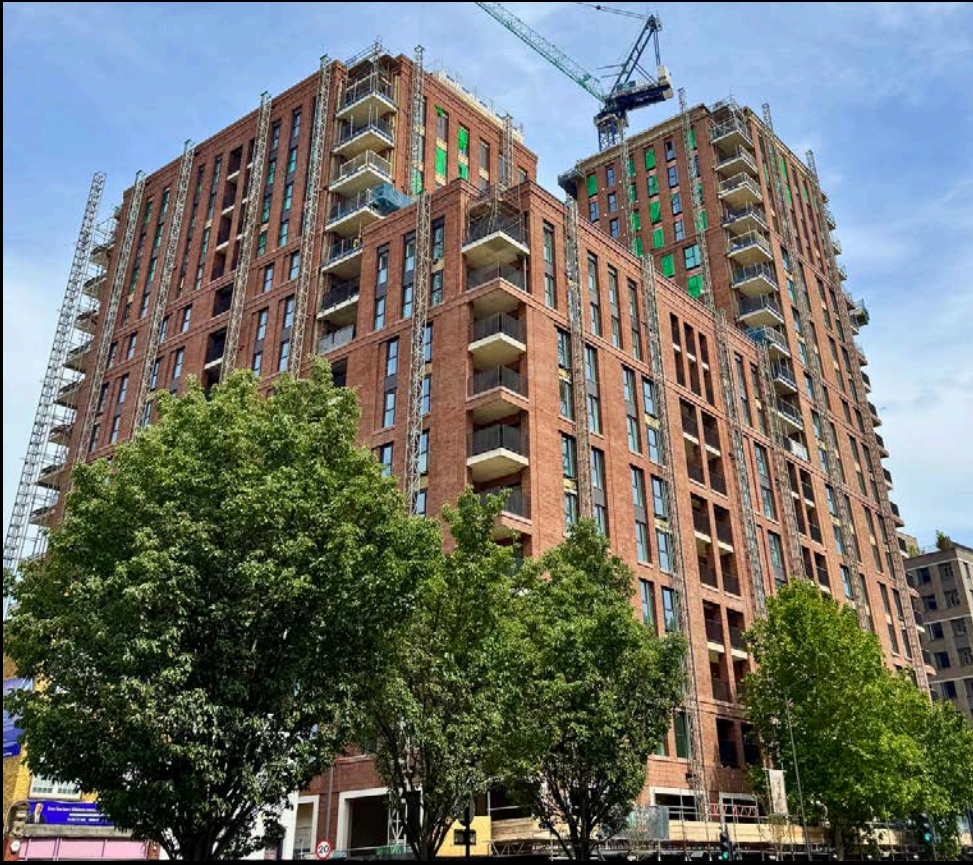
### PROGRESS UPDATE:

- The brickwork is progressing on all elevations and nearing completion
- Party walls and pod/PUC positioning with connections are complete
- Internal partitions, firestopping and closing ceilings are progressing up to Levels 17, 15 and 14 respectively
- 1st fix M&E is in progress up to Level 16
- Plastering, mist coat and latex works are progressing up to Levels 13, 12, and 12 respectively
- 2nd fix carpentry is in progress up to Level 10
- Kitchen installation is in progress to Levels 13 and 14, with flooring to Levels 11 and 12
- Inset balcony balustrade installation is in progress up to Level 14, with decorations progressing up to Level 7
- Balcony paving is ongoing, with builders clean and mastic in progress to Levels 3 and 4
- The two-bed show apartment dressing is complete and open for viewings
- HG snagging and de-snagging are ongoing

# THE BeCa

## CONSTRUCTION UPDATE

MAY 2026



A DEVELOPMENT BY AVANTON: